

SCIENCE BEHIND THE SMILE

≡ Index

WHO WE ARE

WHY IVISMILE

APPENDIX 1
Base Products



OUR MISSION

We are “Science behind the smile”, manufacturer of ***private label*** innovative oral care products.

Quick Facts

PRODUCTS

Electronic Toothbrushes
Teeth Whitening Kits
Teeth Whitening Pens
Teeth Whitening Strips
Water Flossers
Teeth Whitening Gel
Teeth Whitening Toothpaste
Other Oral Care Products

FOUNDED

2018

OPERATIONS

Frisco, TX (Corporate Headquarters)
Nanchang, China (Support Offices)
Zhangshu, China (Factory)

CERTIFICATIONS

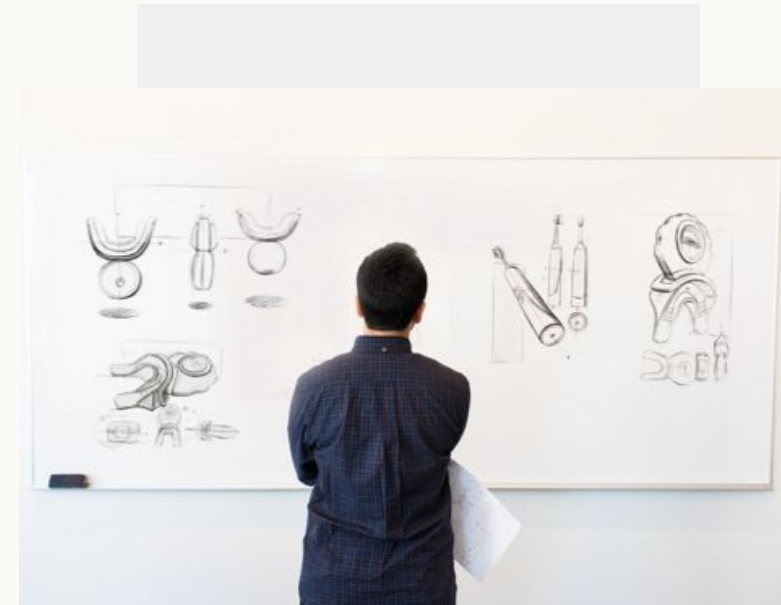
ISO9001
ISO22716
ISO13485
GMP
BSCI

ANNUAL REVENUE

US\$20 million

CURRENT MARKETS

US, EU, AU



≡ Why IVISMILE?

FACTORY DIRECT

- China Factory, saving your cost and building your margins
- USA Office, saving time and building efficiency



Why IVISMILE?

PROVEN SUCCESS

- Many clients are world class corporations and some are publicly traded.
- IVISMILE manufactured products are being sold in major retailers, distributors, and of course E-tails.



Why IVISMILE?

QUALITY MANAGEMENT

- Manufacturing facilities comply with international quality management systems ISO9001 / ISO13485 / ISO22716 / GMP / BSCI;
- Partnership with SGS for Quality Management Audit & Testing of products
- Products comply with RoHS, CPSR, EMC, REACH, FCC, BPA FREE, RDA TEST, CA65, CE, etc.



Why IVISMILE?



ISO13485



GMP



ISO22716

Why IVISMILE?

CAPACITY

- 3 Levels of Private Level with Level 3 offering exclusive supply.
- Capacity of production: **5 millions** sets of kits by **2025**.

| | Level 1 | Level 2 | Level 3 |
|-------------------------|---------|---------|---------|
| LOGO | ● | ● | ● |
| GRAPHIC | ● | ● | ● |
| WORDING | ● | ● | ● |
| PRODUCT MODIFICATION | | ● | |
| PACKAGING MATERIAL | | ● | ● |
| NEW PRODUCT DEVELOPMENT | | | ● |
| EXCLUSIVE SUPPLY | | | ● |



Why IVISMILE?

CUTTING EDGE TECHNOLOGY

While Market is still

- Gen 2 (Battery)
- Gen 3 (Wired)

IVISMILE has been offering

- IVISMILE 4 (Gen 4: Rechargeable & **Wireless**,)
- IVISMILE 5 (Gen 5: Rechargeable, Sanitizing & Wireless)
- IVISMILE 6 ((Gen 6 - Rechargeable, Self sanitizing & Wireless
- LED Electric Toothbrush (Rechargeable, smart timer & Wireless)



Why IVISMILE?



IVISMILE 6
(Gen 6 - Rechargeable, self sanitizing & Wireless)



LED Power e-toothbrush
(Rechargeable, Smart timer & Wireless)

Why IVISMILE?

FLEXIBLE PACKAGING

Affordable to Luxury



≡ Why IVISMILE?

SUMMARY

1. **Factory Direct**
 - Saving Time and Cost
2. **Proven Success**
 - Products in Major Retailers
3. **Quality Management**
 - ISO Certified by SGS
4. **Capability**
 - 3 levels of Private Label
 - Robust Manufacturing capability
5. **Cutting Edge Technology**
 - Wireless Whitening Kit
 - Patented LED Toothbrush
6. **Flexible Packaging**
 - Premium to Affordable



Appendix 1

BASE PRODUCTS



BASE PRODUCTS

Teeth Whitening Kit

BASE MODEL: IVISMILE 6

MAIN FEATURE & SPEC

- SGS approved whitening effect
- Gel shelf life: 2 years
- UV sterilization travel case
- 15 + 10 min timer
- 32 LED Light (12 red light+ 20 blue light)
- 1st gear blue light with 15 minutes timer
- 2nd gear red and blue light with 10 minutes timer
- 300mAh rechargeable lithium battery (2 hours for full charge)
- Battery time: 4-6 times
- Waterproof level: IPX5
- Usage time: once a day, 10-15 minutes each time



BASE PRODUCTS

Teeth Whitening Kit

BASE MODEL: IVISMILE 5

MAIN FEATURE & SPEC

- Rechargeable, Sanitizing & Wireless
- Silicone Mouth Tray, Detachable to sanitize with hot water
- 32 LED Light (Blue & Red)
- Timer: 15 Mins
- 3x2ml Whitening AI Pens
- Luxury Cardboard Box



BASE PRODUCTS

Teeth Whitening Kit

BASE MODEL: IVISMILE 4

MAIN FEATURE & SPEC

- Rechargeable & Wireless
- 32 LED Light (Blue & Red)
- Timer: 15 Mins
- 3x2ml Whitening AI Pens
- Food Grade Mouth Tray
- Luxury Cardboard Box



BASE PRODUCTS

Teeth Whitening Pen

BASE MODEL: IVISMILE P4

MAIN FEATURE & SPEC

- 4 ml Plastic/Al Pens
- HP 9% Gel (Or, CP 35% Gel)
- Click/Twist Pen
- Luxury Cardboard Box



BASE PRODUCTS

Teeth Whitening Pen

BASE MODEL: IVISMILE P2

MAIN FEATURE & SPEC

- 2 x 2ml Plastic/Al Pens
- HP 9% Gel (Or, CP 35% Gel)
- Click/Twist Pen
- Paper Box



BASE PRODUCTS

Electric Toothbrush

BASE MODEL: IVISMILE T4

MAIN FEATURE & SPEC

- 1 Electric toothbrush
- Mode: 3 (Clean, White, Sensitive)
- Smart Timer: 2 mins for each mode
- Li-ion battery
- 2 brush heads
- 1 Etb body
- 1 charging cord (USB-type c direct charging)
- Colors: White, Black, Pink



BASE PRODUCTS

Electric Toothbrush

BASE MODEL: IVISMILE T3

MAIN FEATURE & SPEC

- 1 Travel Electric toothbrush
- Mode: 3 (Clean, Strengthen, Polish)
- Smart Timer: 2 mins for each mode
- Li-ion battery
- 2 brush heads
- 1 Etb body
- 1 charging cord (USB-type c direct charging)
- Colors: Multiple options available



BASE PRODUCTS

LED Electric Toothbrush

BASE MODEL: IVISMILE T2

MAIN FEATURE & SPEC

- 6 LED Lights
- 4 Modes: Clean, White, Polish and Gum Care
- Smart Timer: 2 mins with pause reminder every 30 seconds auto off
- Patented wireless Power Transmission Technology
- Rechargeable Battery
- Luxury Cardboard Box



BASE PRODUCTS

Teeth Whitening Strip (Dry)

BASE MODEL: IVISMILE DS1

MAIN FEATURE & SPEC

- 14 pouches
- 2 Strips per pouch (1 upper & 1 lower)
- HP Gel, or PAP
- Cardboard Box
- pH 6.5-7
- Dry Type
- No Mess
- No Alcohol (optional)



BASE PRODUCTS

Teeth Whitening Strip (Wet)

BASE MODEL: IVISMILE WS1

MAIN FEATURE & SPEC

- 14 pouches
- 2 Strips per pouch (1 upper & 1 lower)
- HP Gel, or PAP
- Cardboard Box
- pH 6.5-7
- Wet type



BASE PRODUCTS

Water Flosser

BASE MODEL: IVISMILE F1

MAIN FEATURE & SPEC

- 1 Water flosser unit
- 3 modes (Gentle, Standard, Pulsate)
- Rechargeable Battery
- 3 Nozzle
- Charging Cord
- 1 Owner's Manual
- 1 Travel Bag
- 1 Microfiber Cloth
- Colors: Black or White



BASE PRODUCTS

Teeth Max Whitening Gel

BASE MODEL: IVISMILE MG1

MAIN FEATURE & SPEC

- 1 OZ/30ml
- 1 Hydrogen Peroxide Max Gel
- Produces outstandingly bright outcomes when combined with toothpaste.



BASE PRODUCTS

Teeth Whitening Toothpaste

BASE MODEL: IVISMILE TP1

MAIN FEATURE & SPEC

- 4 OZ
- PBL Tube
- Hydrogen Peroxide/Baking Soda/Charcoal Powder
- Cardboard Box



BASE PRODUCTS

Other Products

Teeth Whitening Kits

- Ivismile 1
- Ivismile 2
- Ivismile 3

Teeth Whitening Pen & Syringes

- Ivismile S1

Teeth Whitening LED Light Mouthpieces

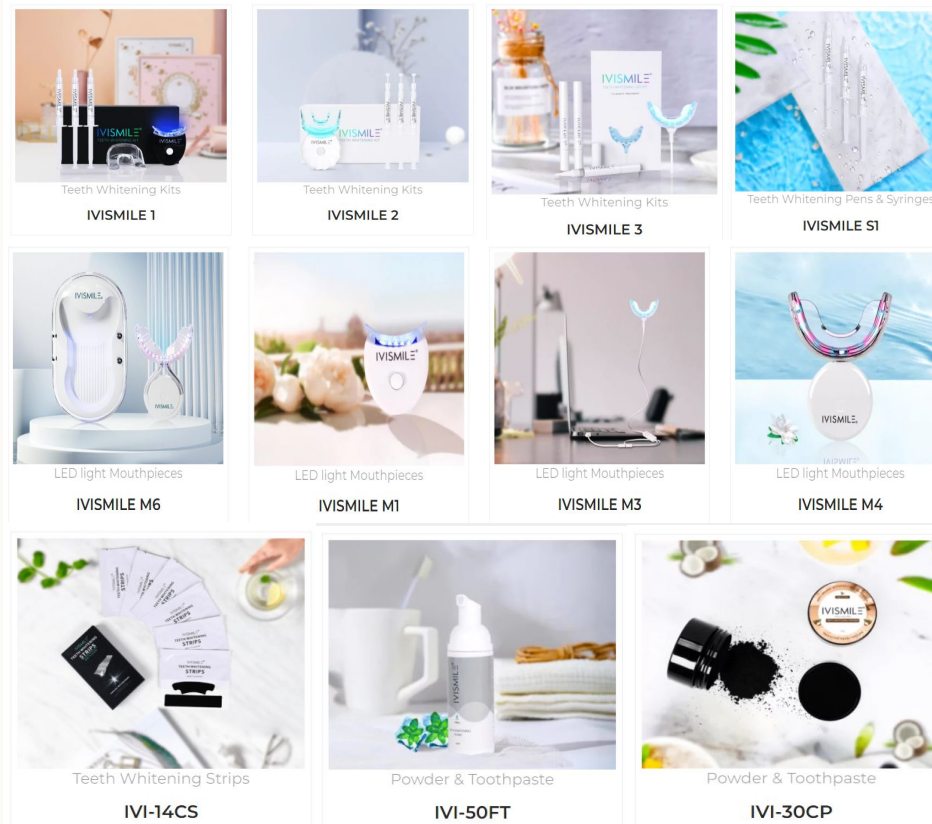
- Ivismile M1
- Ivismile M3
- Ivismile M4
- Ivismile M6

Teeth Whitening Stripes

- IVI-14CS

Teeth Whitening Powder & Toothpaste

- IVI-50FT
- IVI-30CP



SCIENCE BEHIND THE SMILE